



# TAI-SAW TECHNOLOGY CO., LTD.

No. 3, Industrial 2nd Rd., Ping-Chen Industrial District,  
Taoyuan, 324, Taiwan, R.O.C.

TEL: 886-3-4690038 FAX: 886-3-4697532

E-mail: [tstsales@mail.taisaw.com](mailto:tstsales@mail.taisaw.com) Web: [www.taisaw.com](http://www.taisaw.com)

## Approval Sheet For Product Specification

Issued Date:

Product Name: 915MHz Tow-Port Saw Resonator

TST Parts No.: TD0105A

Customer Parts No.: \_\_\_\_\_

Company: _____
Division: _____
Approved by : _____
Date: _____

Checked by: Paul Ni

Approval by: Francis Chen

Date: Sep. 28. 2006



# TAI-SAW TECHNOLOGY CO., LTD.

No. 3, Industrial 2nd Rd., Ping-Chen Industrial District,  
Taoyuan, 324, Taiwan, R.O.C.

TEL: 886-3-4690038 FAX: 886-3-4697532

E-mail: [tstsales@mail.taisaw.com](mailto:tstsales@mail.taisaw.com) Web: [www.taisaw.com](http://www.taisaw.com)

## 915MHz Two-Port SAW Resonator

MODEL NO.: TD0105A

REV. NO.:2

### A. FEATURES:

1. 2-Port Resonator(180 Degree)

### B. MAXIMUM RATING:

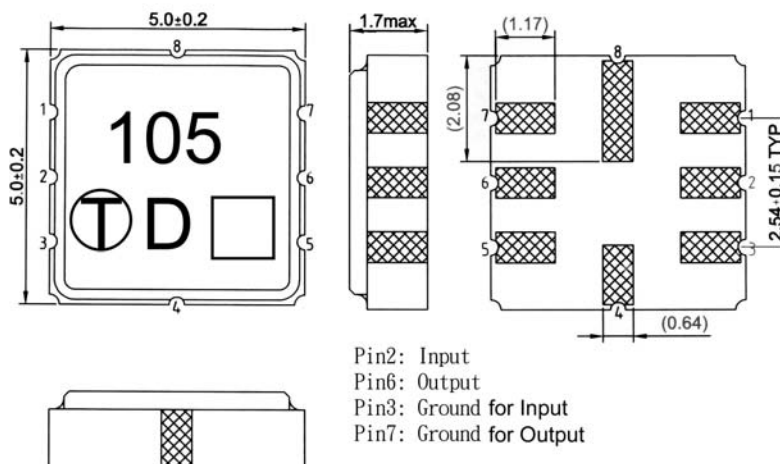
1. Power Dissipation: +0 dBm.
2. DC voltage: 30 V.
3. Storage Temperature: -40 °C to 85 °C.
4. Operating Temperature: -30 °C to 85 °C

### C. ELECTRICAL CHARACTERISTICS:

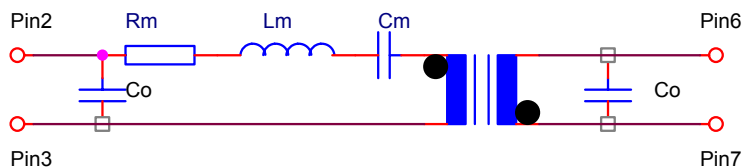
RoHS Compliant  
Lead free  
Lead-free soldering

Characteristic	Units	Minimum	Typical	Maximum
Center frequency <b>Fr</b>	<b>MHz</b>	914.85	915	915.15
Insertion Loss <b>IL</b>	<b>dB</b>	-	8	9
Equivalent Circuit Elements				
Parallel capacitance <b>Co</b>	<b>pF</b>	-	1.9	
Motional resistance <b>R1</b>	<b>Ohm</b>	-	125	
Motional inductance <b>L1</b>	<b>μH</b>	-	134.5	
Motional capacitance <b>C1</b>	<b>fF</b>	-	0.225	
Temp.coeff.	<b>ppm/c*2</b>	-	0.032	-
Turnover To	<b>deg.C</b>		25	
Package size		SMD5x5mm		

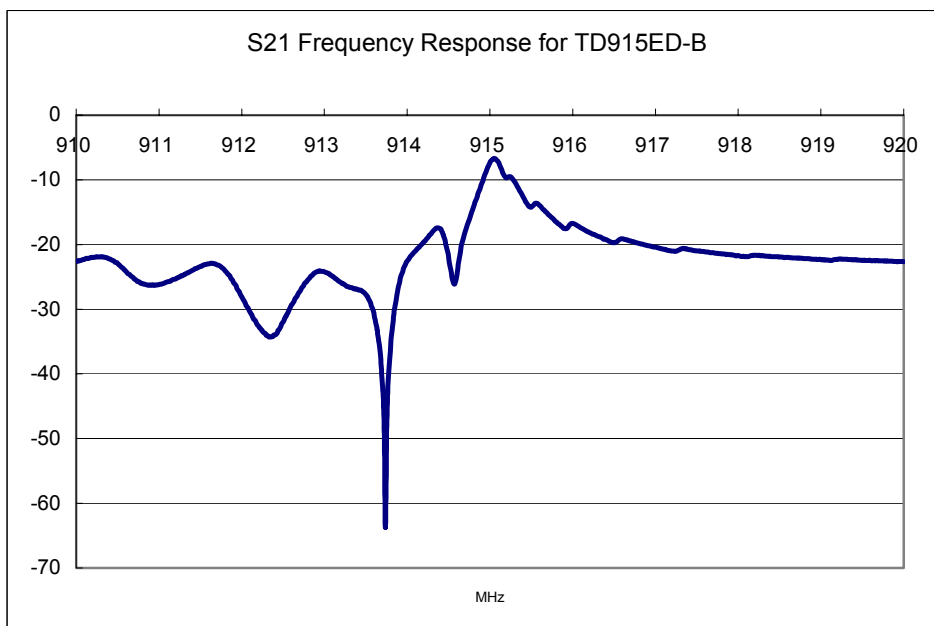
### D. OUTLIN DRAWING:



**E. EQUIVALENT CIRCUIT**

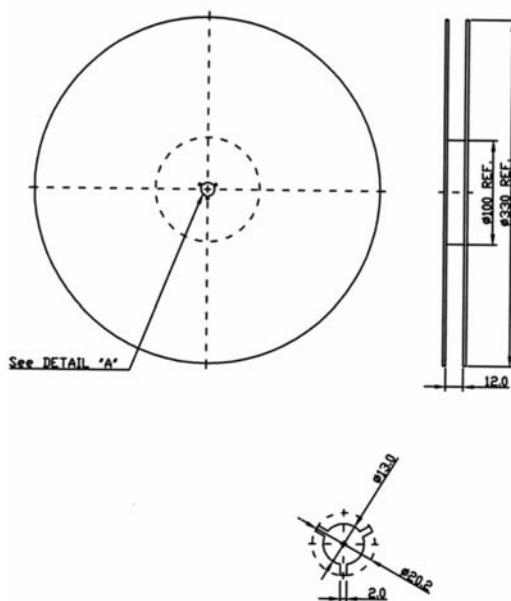


**F. FREQUENCY CHARACTERISTICS:**

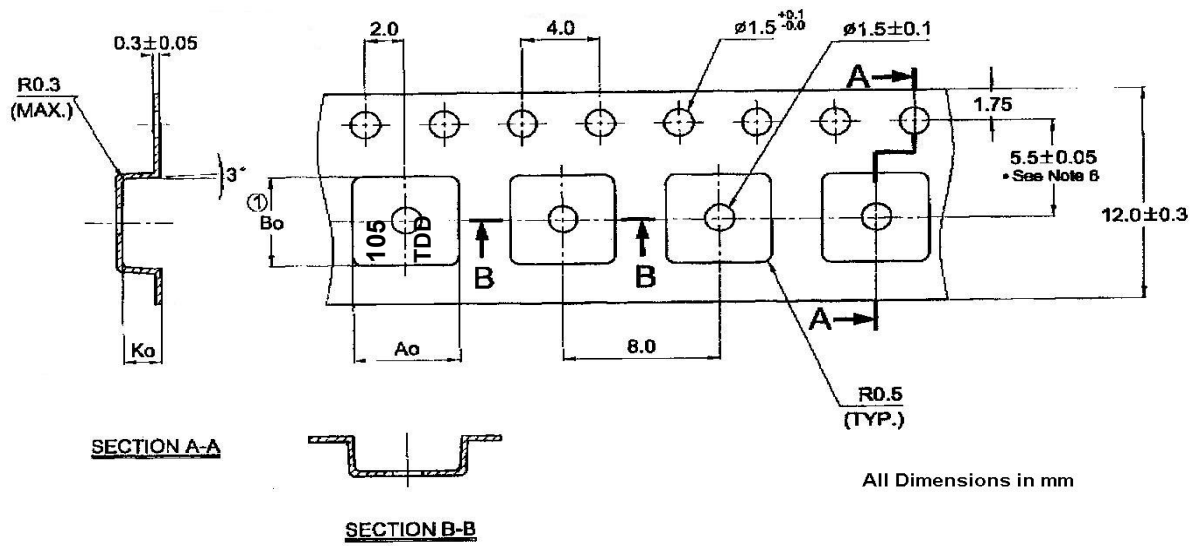


**G. PACKING:**

1. REEL DIMENSION



## 2.TAPE DIMENSION



$A_0 = 5.30 \pm 1$  mm

$B_0 = 5.30 + 0.2 / - 0.0$  mm

$K_0 = 2.0 \pm 0.1$  mm